

Boulevard of broken dreams

Green Day

♩ = 83,5

Violoncello

Violoncello

Violoncello

Violoncello

5

Vc.

Vc.

Vc.

Vc.

10

Vc.

Vc.

Vc.

Vc.

15

Vc.

Vc.

Vc.

Vc.

Detailed description: This system contains measures 15 through 19. The top staff (Vc.) features a melodic line with eighth-note patterns and rests. The second staff (Vc.) has a bass line with eighth-note pairs and rests. The third staff (Vc.) continues the bass line with eighth-note pairs. The fourth staff (Vc.) continues the bass line with eighth-note pairs. A fermata is placed over the first measure of the second staff.

20

Vc.

Vc.

Vc.

Vc.

Detailed description: This system contains measures 20 through 25. The top staff (Vc.) has a melodic line with eighth-note patterns, a sharp sign (#) above a note in measure 22, and a fermata in measure 23. The second staff (Vc.) has a bass line with eighth-note patterns. The third staff (Vc.) has a bass line with eighth-note patterns. The fourth staff (Vc.) has a bass line with eighth-note patterns.

26

Vc.

Vc.

Vc.

Vc.

Detailed description: This system contains measures 26 through 30. The top staff (Vc.) has a melodic line with eighth-note patterns and a fermata in measure 29. The second staff (Vc.) has a bass line with eighth-note patterns. The third staff (Vc.) has a bass line with eighth-note patterns. The fourth staff (Vc.) has a bass line with eighth-note patterns.

32

Four staves of music in bass clef with a key signature of one flat. The first staff (Vc.) features a melodic line with a fermata on the first measure. The second staff (Vc.) has a steady eighth-note accompaniment. The third staff (Vc.) has a similar eighth-note accompaniment with some chromatic movement. The fourth staff (Vc.) has a steady eighth-note accompaniment. All staves end with a fermata.

37

Four staves of music in bass clef with a key signature of one flat. The first staff (Vc.) has a melodic line with a fermata on the first measure. The second staff (Vc.) has a steady eighth-note accompaniment. The third staff (Vc.) has a steady eighth-note accompaniment. The fourth staff (Vc.) has a steady eighth-note accompaniment.

42

Four staves of music in bass clef with a key signature of one flat. The first staff (Vc.) has a melodic line with a fermata on the first measure. The second staff (Vc.) has a steady eighth-note accompaniment. The third staff (Vc.) has a steady eighth-note accompaniment. The fourth staff (Vc.) has a steady eighth-note accompaniment. All staves end with a fermata.

47

Vc. Vc. Vc. Vc.

This system contains measures 47 through 50. It features four staves of Violoncello (Vc.) in bass clef with a key signature of one flat. The top staff has a complex melodic line with many sixteenth notes and slurs. The lower three staves provide harmonic support with simpler rhythmic patterns. There are fermatas in measures 48 and 49.

51

Vc. Vc. Vc. Vc.

This system contains measures 51 through 55. It features four staves of Violoncello (Vc.) in bass clef with a key signature of one flat. The top staff continues the melodic line from the previous system. The lower three staves have more active rhythmic patterns, including eighth and sixteenth notes. There are fermatas in measures 52 and 54.

56

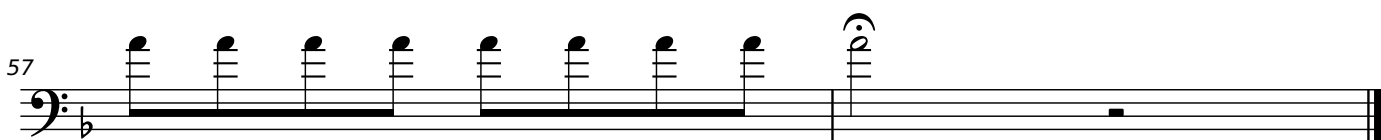
Vc. Vc. Vc. Vc.

This system contains measures 56 through 58. It features four staves of Violoncello (Vc.) in bass clef with a key signature of one flat. The top staff has a melodic line that ends with a fermata. The lower three staves have rhythmic patterns that also end with a fermata in measure 58. The key signature changes to two sharps in measure 58.

Violoncello 1 Boulevard of broken dreams

Green Day

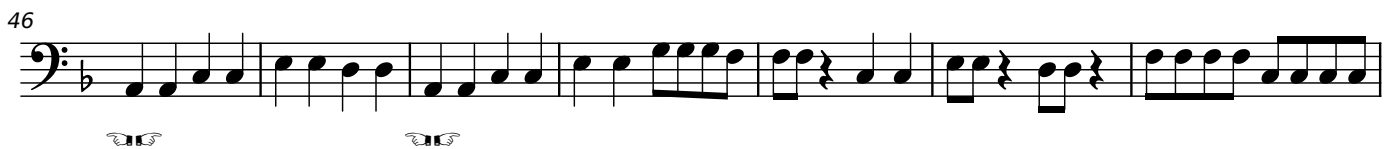
$\text{♩} = 83,5$



Violoncello 2 Boulevard of broken dreams

Green Day

$\text{♩} = 83,5$



Violoncello 3 Boulevard of broken dreams

Green Day

$\text{♩} = 83,5$

10

18

25

34

41

48

55

Violoncello 4 Boulevard of broken dreams

Green Day

♩ = 83,5

