

For Emily

Whenever I May Find Her

Paul Simon, ar. Skilleter

$\text{♩} = 96$

Violoncello

Violoncello

Violoncello

Violoncello

5
Vc.

Vc.

Vc.

Vc.

10
Vc.

Vc.

Vc.

Vc.

14

Vc. G

Vc. G

Vc. G

Vc. G

Detailed description: This system contains measures 14 through 18. The first three staves (Vc. G) feature melodic lines with long slurs. The first staff has a half-note G2, a half-note G3, and a half-note G4. The second staff has a half-note G2, a half-note G3, and a half-note G4. The third staff has a half-note G2, a half-note G3, and a half-note G4. The fourth staff (Vc. G) has a continuous eighth-note accompaniment pattern: G2-A2-B2-C3-D3-E3-F3-G3, with slurs under each eighth note.

19

Vc. G

Vc. G

Vc. G

Vc. G

Detailed description: This system contains measures 19 through 23. The first three staves (Vc. G) feature melodic lines with slurs. The first staff has a quarter-note G3, a quarter-note A3, a quarter-note B3, and a quarter-note C4. The second staff has a half-note G2, a half-note G3, and a half-note G4. The third staff has a half-note G2, a half-note G3, and a half-note G4. The fourth staff (Vc. G) has a continuous eighth-note accompaniment pattern: G2-A2-B2-C3-D3-E3-F3-G3, with slurs under each eighth note.

24

Vc. G

Vc. G

Vc. G

Vc. G

Detailed description: This system contains measures 24 through 28. The first three staves (Vc. G) feature melodic lines with slurs. The first staff has a quarter-note G3, a quarter-note A3, a quarter-note B3, and a quarter-note C4. The second staff has a half-note G2, a half-note G3, and a half-note G4. The third staff has a half-note G2, a half-note G3, and a half-note G4. The fourth staff (Vc. G) has a continuous eighth-note accompaniment pattern: G2-A2-B2-C3-D3-E3-F3-G3, with slurs under each eighth note.

29

Four staves of music in bass clef with a key signature of one sharp (F#). The first staff (Vc.) contains a melodic line with eighth and sixteenth notes, including some grace notes. The second and third staves (Vc.) feature long, sustained notes with slurs, some of which are tied across measures. The fourth staff (Vc.) has a rhythmic accompaniment of eighth notes with slurs.

34

Four staves of music in bass clef with a key signature of one sharp (F#). The first staff (Vc.) continues the melodic line from the previous system. The second and third staves (Vc.) have sustained notes with slurs, some tied across measures. The fourth staff (Vc.) continues the rhythmic accompaniment of eighth notes with slurs.

38

Four staves of music in bass clef with a key signature of one sharp (F#). The first staff (Vc.) begins with a double bar line, followed by a melodic line. The second and third staves (Vc.) have sustained notes with slurs, some tied across measures. The fourth staff (Vc.) continues the rhythmic accompaniment of eighth notes with slurs.

43

Four staves of music in bass clef with a key signature of one sharp (F#). The first staff (Vc.) contains a melodic line with eighth and sixteenth notes. The second and third staves (Vc.) feature long, sustained notes with slurs. The fourth staff (Vc.) has a rhythmic accompaniment of eighth notes with slurs.

48

Four staves of music in bass clef with a key signature of one sharp (F#). The first staff (Vc.) has a melodic line with slurs. The second and third staves (Vc.) have sustained notes with slurs. The fourth staff (Vc.) continues the rhythmic accompaniment of eighth notes with slurs.

54

Four staves of music in bass clef with a key signature of one sharp (F#). The first staff (Vc.) has a melodic line with slurs. The second and third staves (Vc.) have sustained notes with slurs. The fourth staff (Vc.) continues the rhythmic accompaniment of eighth notes with slurs.

Violoncello 1

For Emily

Whenever I May Find Her

Paul Simon, ar. Skilleter

♩ = 96 $\frac{4}{4}$

11

16

22

27

33

39

48

Violoncello 2

For Emily

Whenever I May Find Her

Paul Simon, ar. Skilleter

♩ = 96 $\frac{4}{4}$

16

27

39

53

Violoncello 3

For Emily

Whenever I May Find Her

Paul Simon, ar. Skilleter

$\text{♩} = 96$
4



18



27



39



51



Violoncello 4

For Emily

Whenever I May Find Her

Paul Simon, ar. Skilleter

♩ = 96

First staff of music, measures 1-4.

5

Second staff of music, measures 5-8.

9

Third staff of music, measures 9-12.

13

Fourth staff of music, measures 13-15.

16

Fifth staff of music, measures 16-19.

20

Sixth staff of music, measures 20-23.

24

Seventh staff of music, measures 24-26.

27

Eighth staff of music, measures 27-30.

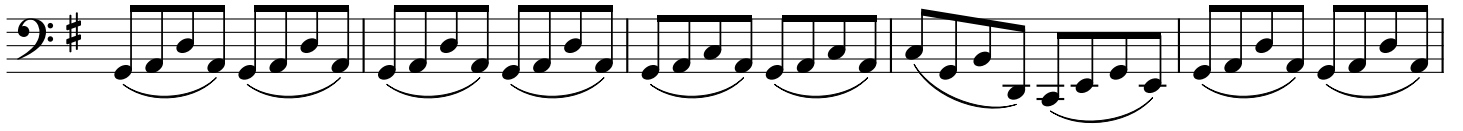
31

Ninth staff of music, measures 31-34.

35

Tenth staff of music, measures 35-38.

39



44



49



55

