

# Waltz No 2

by Shostakovich,  
Arranged by John Skilleter, with input from Olicana Dissonances & Steve Bingham

16/10/17

$\text{♩} = 160$   
□ V

Violoncello

Violoncello

Violoncello

Violoncello

11

Vc.

Vc.

Vc.

Vc.

22

Vc.

Vc. *p*

Vc. *p*

Vc. *p*

32

Vc.

Vc. *f*

Vc. *f*

Vc. *f*

40

Vc. *pizz*  
sur les jambes

Vc. *mf*  
*pizz*  
sur les jambes

Vc. *mf*

Vc. *espressivo*

51

Vc. 1

Vc. 2

Vc. 3

Vc. 4

*f*

*f*

*f*

62

Vc. 1

Vc. 2

Vc. 3

Vc. 4

*mp* arco *mp*

*mp* *mp*

*mp* *mp*

*f*

72

Vc. *mf* *mf* *legato*

Vc. *mf* *mf* *legato*

Vc. *mf* *f*

Vc. *mf* *mf*

81

Vc. *mf* *mf*

Vc.

Vc.

Vc.

91

Vc. *Rit.*

Vc. *f*

Vc. *f*

Vc. *f*

Vc. *f*

G

102

Tempo giusto

Vc. *mp*

Vc. *mp* < > *rit.* *f*

Vc. *mp* < > *f*

Vc. *mp* < > *p*

114

Vc.

Vc.

Vc.

Vc.

125

a tempo  
Rit.

Vc.

Vc. *p*

Vc. *p*

Vc. *p* > > > > > > > >

Vc. *mp*

Vc.

Vc.

Vc.

168

Vc. *f*

Vc. *f*

Vc. *f*

Vc. *f*

179

Vc.

Vc.

Vc.

Vc.

190

Vc.

Vc. *p*

Vc.

Vc. *p*

Musical score for four Violoncello (Vc.) parts, measures 199-202. The score is written in bass clef with a key signature of one sharp (F#). The music is marked with a forte (*f*) dynamic. The first two staves feature melodic lines with slurs and accents, while the last two staves provide a steady bass accompaniment. The piece concludes with a fermata over the final notes.



# Violoncello 1

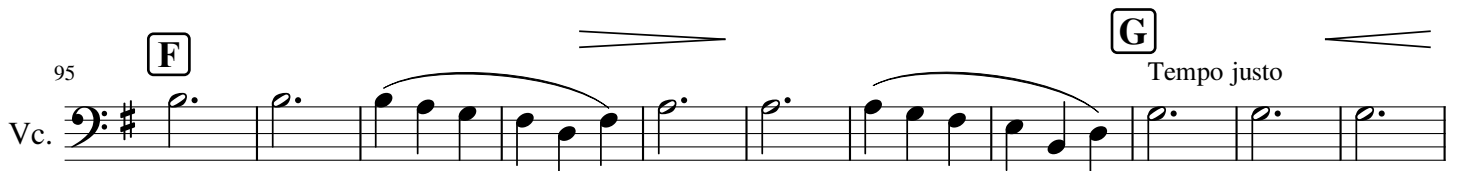
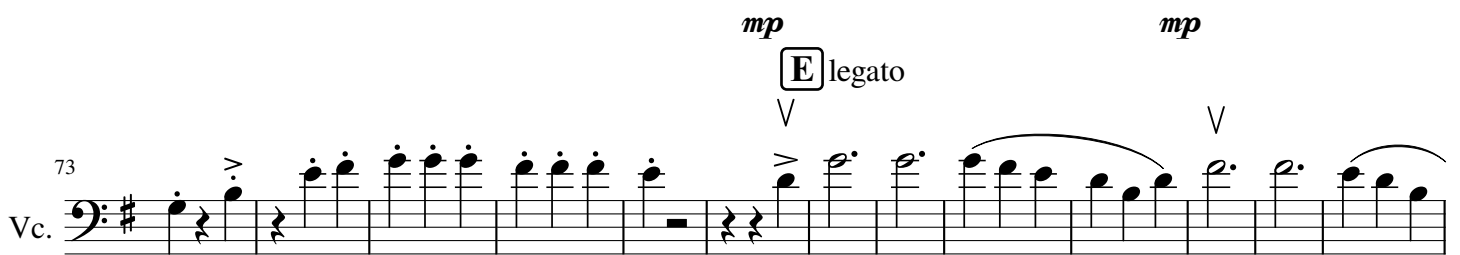
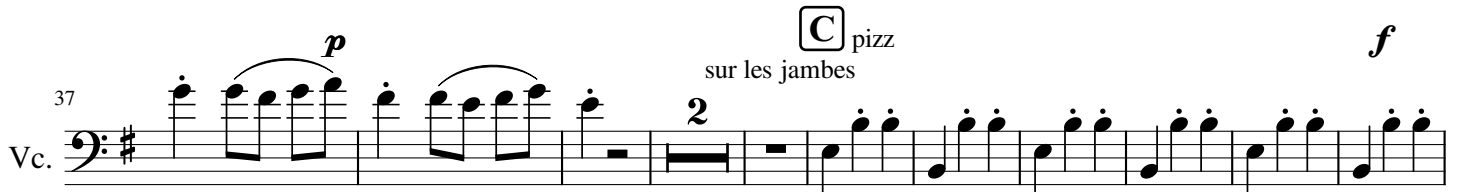
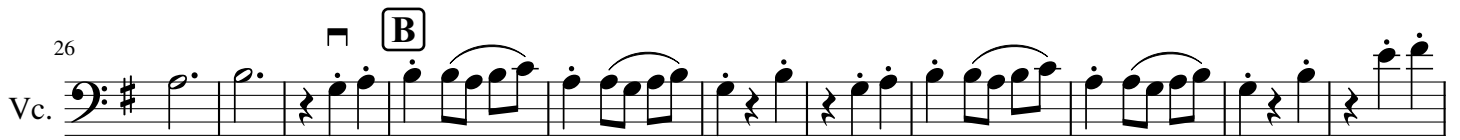
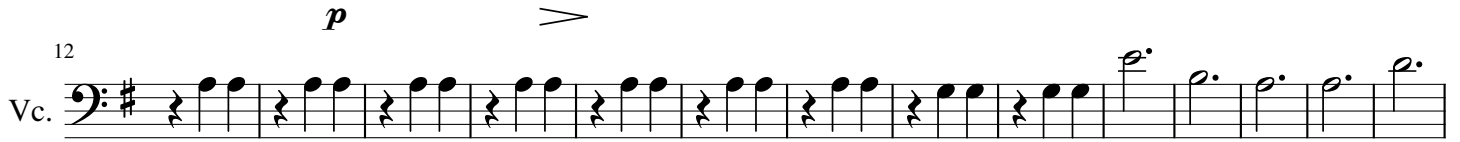
# Waltz No 2

by Shostakovich,  
Arranged by John Skilleter, with input from Olicana Dissonances & Steve Bingham

16/10/17

$\text{♩} = 160$   
V

**A**



111 **H**

Vc. *f*

124 Rit. **I** a tempo **J**

Vc. *> p*

137

Vc. *p*

150 **K**

Vc. *p*

161 **L** **V**

Vc. *f*

172 **V**

Vc. *<*

187 **M**

Vc. *p*

198

Vc. *f* *f*

# Violoncello 2

# Waltz No 2

by Shostakovich,  
Arranged by John Skilleter, with input from Olicana Dissonances & Steve Bingham

16/10/17

$\text{♩} = 160$   
V

**A**

Violoncello

*p* > *espr* *mp* *sivo*

15

Vc.

*p*

29

**B**

Vc.

pizz

*f*

**C**

sur les jambes

38

Vc.

*mf*

50

Vc.

arco

62

Vc.

*mp*

*mp*

**E**

74

Vc.

*mf*

*mf*

**F**

Rit.

89

Vc.

< *f*

*mp* <

Tempo giusto

105

Vc.

111 **H**  
Vc. *f*

125 **I** Rit. a tempo **J**  
Vc. *> p*

138  
Vc.

150 **K**  
Vc. *p*

161 **L**  
Vc. *f* *V*

174  
Vc.

191 **M**  
Vc.

201 *V* *V*  
Vc. *f*

# Violoncello 3

# Waltz No 2

by Shostakovich,  
Arranged by John Skilleter, with input from Olicana Dissonances & Steve Bingham

16/10/17

$\text{♩} = 160$   $\square \nabla$  **A**

Violoncello  $\text{p}$   $>$

12

Vc.  $\text{p}$   $>$

24  $\square$  **B**

Vc.  $\text{p}$

36  $\square$  **C** *espressivo*

Vc.  $f$   $mf$

50

Vc.  $<$   $< f$

66  $\square \nabla \nabla$  **D**

Vc.  $mp$   $mp$   $mf$

76 *legato*  $\nabla$  **E**

Vc.  $f$

90 *Rit.* **F** **G** *Tempo giusto*

Vc.  $< f$   $mf$   $<$

106

Vc.  $\text{rit.}$

111 **H**

Vc. *f*

126 **I** Rit. a tempo **J**

Vc. *p*

145 **K**

Vc. *p* *p*

161 **L**

Vc. *p* *f* *f*

175 **V**

Vc.

191 **M**

Vc.

199 **V**

Vc. *f* *f*

Violoncello 4

Waltz No 2 by Shostakovich,  
Arranged by John Skilleter, with input from Olicana Dissonances & Steve Bingham

16/10/17

♩ = 160

**A**

Violoncello

13

Vc.

25

**B**

Vc.

**C**

36

Vc.

51

Vc.

66

**D**

Vc.

75

**E**

Vc.

86

Rit.

**F**

Vc.

97

Vc.

103 **G** Tempo giusto **H**

Vc. *mp* < > *f*

118 **I** a tempo **J**

Vc. Rit. **4** > *mp*

135

Vc. *p*

150 **K**

Vc.

166 pizz **L**

Vc. *p* < *f*

178

Vc.

190 **M**

Vc. *p* *f*

202 arco

Vc. *f* >